



ROOSTER OPEN 29er AND OPTIMIST NATIONAL CHAMPIONSHIP

BALATONFÜRED, 27-30 SEPTEMBER 2018

Organizing Authority: Balatonfüredi Yacht Club, in conjunction with the Hungarian Yachting Association

SAILING INSTRUCTIONS

NOTATIONS:

- [DP]** The penalty for a breach of this rule may, at the discretion of the protest committee, be less than disqualification.
- [SP]** A rule for which a standard penalty may be applied by the race committee without a hearing or a discretionary penalty applied by the protest committee with a hearing. This changes RRS 63.1 and A5.
- [NP]** A rule that shall not be grounds for protests by a boat. This changes RRS 60.1(a).

1. RULES

- 1.1 The regatta will be governed by the rules as defined in *The Racing Rules of Sailing* (RRS). Other documents under RRS Definition: Rule (g) include:
- (a) the Regatta Regulations of the Hungarian Yachting Association (RR),
 - (b) the Advertising Code of the Hungarian Yachting Association,
 - (c) RRS Appendix P, Special Procedures for Rule 42, and
 - (d) RRS Appendix T, Arbitration.
- 1.2 If there is a conflict between languages the English text will take precedence.

2. [DP] CODE OF CONDUCT

- 2.1 Competitors and support persons shall comply with any reasonable request from a regatta official.
- 2.2 Boats not racing that are on a racing area or passing through a racing area where other boats are racing, shall not interfere other boats racing or official boats.

3. NOTICES TO COMPETITORS

- 3.1 Notices will be posted on the official notice board located at the entrance of the Balatonfüredi Yacht Club.
- 3.2 Notices will also be posted at <http://byc.hu/regatta/29er-opti/>. Failure to post or delay in posting a notice on the website will not be grounds for redress. This changes RRS 62.



4. CHANGES TO SAILING INSTRUCTIONS

- 4.1 Except for changes to the schedule of races or racing area assignments, changes to the sailing instructions will be posted no later than two hours before the scheduled time of the first race affected.

5. SIGNALS MADE ASHORE

- 5.1 Signals ashore will be displayed on the signal mast of the Balatonfüredi Yacht Club.
 5.2 When a visual signal is displayed over a class flag or a racing area flag, the signal applies only to that class or racing area. This changes the RRS Race Signals preamble.
 5.3 When flag AP is displayed ashore, '1 minute' is replaced with the times in minutes shown below in the race signal AP.

Racing Area	Time in minutes	
	29er	Optimist
Alfa	30	45
Bravo, Charlie	45	60

6. FORMAT

- 6.1 A 29er will sail a single-fleet series.
 6.2 The Optimist class will be split into two fleets and will sail a qualifying series followed by a final series as described in Addendum 1.

7. RACING AREAS

- 7.1 The racing areas are shown in Addendum 2.
 7.2 Racing areas will be identified with the following racing area flags.

Racing area	Flag
Alfa	Black letter A on a yellow background
Bravo	White letter B on a green background
Charlie	Black letter C on a white background

8. SCHEDULE OF RACES AND RACING AREA ASSIGNMENTS

- 8.1 The schedule of races, including the time of the daily first warning signals and assignment of classes to racing areas are shown in Addendum 3.
 8.2 To change the schedule of races, an update to Addendum 3 will be posted no later than 20:00 on the previous evening of any race affected.
 8.3 The race committee may reassign a class to any racing area no later than two hours before the scheduled time of the warning signal. However,
 (a) when flag AP is displayed ashore, the racing area may be changed until 15 minutes before the AP is removed, and
 (b) when flag AP is displayed afloat, the racing area may be changed. The race committee signal boat will display flag L and move to the new racing area.
 8.4 On the last scheduled day of racing (30 September 2018) no warning signal will be made after 15:00.



9. CLASS FLAGS

9.1 Class flags are described in the table below.

Class / Fleet	Flag
29er	Red class insignia on a white background
Optimist / yellow, gold	Black class insignia on a yellow background
Optimist / blue, silver	White class insignia on a blue background

10. [DP] IDENTIFICATION

10.1 As provided by the organizing authority, boats or competitors shall carry, display or wear the following as instructed below:

- (a) colored ribbons corresponding to fleets (only for the Optimist class),
- (b) colored bibs for leaders (1st, 2nd and 3rd),
- (c) **[SP]** tracking equipment (only for the Optimist class).

10.2 While racing each Optimist shall display a colored ribbon corresponding to the fleet to which she has been assigned. The ribbon shall be placed on the top of the sprit. The ribbons will be issued at registration and if ribbons are lost or damaged spares will be available at the race office.

10.3 From the start of the second day of racing, leader bibs provided by the organizing authority shall be worn by competitors of the first, second and third ranked boats in each class. Leader bibs will be available in the race office from two hours before the warning signal of the first scheduled race of the day. Leader bibs shall be returned to the race office within the protest time limit of their class or fleet.

10.4 **[SP]** Each Optimist shall carry a tracker at all times whilst afloat. Trackers will be available from the race office from two hours before the warning signal of the first scheduled race of the day and shall be returned there within the protest time limit of their fleet.

11. THE COURSES

11.1 The courses will be windward-leeward or trapezoid. The diagrams in Addendums 4A and 4B show the courses, the course designations, the order in which marks are to be passed, and the side on which each mark is to be left.

11.2 No later than the warning signal, the race committee signal boat will display the course signal (only for the 29er class) and the approximate compass bearing of the first leg. Failure to display the compass bearing will not be grounds for redress. This changes RRS 62.1(a).

12. MARKS

12.1 Marks 1, 2, 3s, 3p, 4s and 4p will be white inflated cylinders. Mark 1a will be a thin yellow inflated cylinder.

12.2 The starting marks will be race committee boats.

12.3 The finishing marks

- (a) for the 29er class will be race committee boats.
- (b) for the Optimist class will be a race committee boat and a spar buoy with an orange flag.

12.4 A gate may be laid after the start.

12.5 When a gate mark is missing, the mark in position shall be left to port.



13. THE START

- 13.1 The starting line will be between staffs displaying orange flags on the starting marks.
- 13.2 To alert boats that a race or sequence of races will begin soon, the orange starting line flag will be displayed with one sound at least five minutes before a warning signal is made.
- 13.3 **[DP]** Boats whose warning signal has not been made shall avoid the starting area during the starting sequence for other races. The starting area is defined as the area 75 meters from the starting line in all directions.
- 13.4 A boat that does not start within four minutes after her starting signal will be scored Did Not Start without a hearing. This changes RRS A4 and A5.
- 13.5 The warning signal for each succeeding race will be made as soon as practicable.

14. CHANGE OF THE NEXT LEG OF THE COURSE

- 14.1 To change the next leg of the course, the race committee will move the original mark (or the finishing mark) to a new position.

15. THE FINISH

- 15.1 The finishing line
 - (a) for the 29er class will be between staffs displaying orange flags on the finishing marks.
 - (b) for the Optimist class a staff displaying an orange flag on the finishing mark on the starboard end and the course side of the port-end finishing mark.

16. TIME LIMITS AND TARGET TIMES

- 16.1 Time limits and target times (in minutes) are as follows.

Class	Time Limit	Mark 1 Time Limit	Finish Window	Target Time
29er	50	20	15	30
Optimist	75	25	20	45

If no boat rounds Mark 1 within the Mark 1 time limit, the race committee shall abandon the race. Failure to meet the target time will not be grounds for redress. This changes RRS 62.1(a).

- 16.2 Any boat that does not finish within the Finish Window (time after the first boat finishes) shall be scored Did Not Finish without a hearing. This changes RRS 35, A4 and A5.

17. PROTESTS AND REQUESTS FOR REDRESS

- 17.1 Protest forms are available at the race office. Protests and requests for redress and reopening shall be delivered there within the appropriate time limit.
- 17.2 The protest time limit for each class or fleet is the number of minutes shown below after
 - (a) the last boat has finished the last race of the day, or
 - (b) the display of "AP over A" or "N over A".

Racing area	Time in minutes
Alfa	75
Bravo, Charlie	90

However, when "AP over A" is displayed ashore, the protest time limit will be 30 minutes after displaying the signal. Where more of the above cases apply, the protest time limit will be whichever the latest is.



- 17.3 Notices will be posted within 30 minutes of the protest time limit to inform competitors of hearings in which they are parties or named as witnesses. Hearings may be scheduled to begin up to 30 minutes before the end of protest time limit. Hearings will be held in the jury room near the race office.
- 17.4 Notices of protests by the race committee or protest committee will be posted to inform boats under RRS 61.1(b).
- 17.5 A list of boats that have been penalized under RRS Appendix P for breaking RRS 42 will be posted.
- 17.6 Penalties for breaches of the class rules, or rules in the NoR and SI marked [DP] or [SP] should the case go to a hearing, are at the discretion of the protest committee and may be less than disqualification.
- 17.7 For breaches of rules in the NoR and SI marked [SP], the race committee may apply a standard penalty without a hearing. However, the race committee may protest a boat when they consider the standard penalty to be inappropriate. A boat that has been penalized with a standard penalty can neither be protested for the same incident by another boat nor can another boat request redress for this race committee action. This changes RRS 60.1, 63.1 and A5.
- 17.8 On the last day of a series, a request for redress based on a protest committee decision shall be delivered no later than 30 minutes after the decision was posted. This changes RRS 62.2.
- 17.9 In RRS 66 change 'On the last scheduled day of racing...' to 'On the last day of a series ...'

18. SCORING

- 18.1 To request a correction of an alleged error in posted results, a boat may complete a scoring enquiry form available at the race office.

19. [DP] [NP] SAFETY REGULATIONS

- 19.1 Boats not leaving the harbor for a scheduled race shall promptly notify the race office.
- 19.2 A boat that retires from racing
- shall notify the race committee before leaving the racing area if possible, or
 - shall notify the race office as soon as possible.

20. [DP] REPLACEMENT OF CREW OR EQUIPMENT

- 20.1 Substitution of competitors will not be allowed without prior written approval of the race committee. Except for the deadline for the entry, the substitute competitor shall comply with requirements in NoR 2 and 3.
- 20.2 Substitution of damaged or lost equipment will not be allowed unless authorized by the race committee. Requests for substitution shall be made to the committee at the first reasonable opportunity.



21. OFFICIAL BOATS

21.1 Official boats will be identified as follows.

Type of boat	Identification
Race Committee	RC on a white background
Protest Committee	JURY on a white background
Media	MEDIA on a green background

21.2 Actions by official boats shall not be grounds for requesting redress by a boat. This changes RRS 60.1(b).

22. SUPPORT BOAT RESTRICTED AREAS

22.1 Support boats shall stay outside areas where boats are racing and shall not be

- (a) closer than 100 m to any boat racing,
- (b) within 100 m to leeward of the starting line or within 100 m of its marks from the time of the preparatory signal until all boats have left the starting area or the race committee signals a postponement, general recall or abandonment,
- (c) between any boat racing and the next mark of the course,
- (d) within 100 m of any mark of the course while boats are in the vicinity of that mark, and
- (e) within 100 m of the finishing line while boats are finishing.

22.2 Support boats shall proceed around the racing area in such a way to avoid any wash that will impact boats racing. Boats that are motoring above five knots shall remain at least 150 m from any boat racing.

22.3 The restrictions in SI 22.1 and 22.2 shall not apply for a support boat giving help to a boat or competitor in danger.

22.4 If flag V is displayed on the race committee signal boat, support boats shall follow any directions of the race committee. These directions override any conflicting rules concerning support boats and support persons.

23. TRASH DISPOSAL

23.1 Trash may be placed aboard support and official boats.

24. DISCLAIMER OF LIABILITY

24.1 Competitors participate in the regatta entirely at their own risk. See RRS 4, Decision to Race. The organizing authority will not accept any liability for material damage or personal injury or death sustained in conjunction with or prior to, during, or after the regatta.



ADDENDUM 1 – QUALIFYING AND FINAL SERIES

1. QUALIFYING SERIES

- 1.1 For the qualifying series boats will be assigned to fleets of, as near as possible, equal size and ability.
- 1.2 Initial assignments will be posted by 9:00 on 27 September 2018 based on the national ranking list available at www.optimist.hu at the start of registration. Boats not included in the national ranking list will be assigned by a seeding committee appointed by the organizing authority.
- 1.3 In the qualifying series, when at least two races have been completed boats will be reassigned to fleets after each day of racing. If all fleets have completed the same number of races, boats will be reassigned on the basis of their ranks in the series. If all fleets have not completed the same number of races, the series scores for reassignment will be calculated for those races, numbered in order of completion, completed by all fleets.
- 1.4 Reassignments will be made as follows:

Rank in Series	Fleet Assignment
1st	yellow
2nd	blue
3rd	blue
4th	yellow
And so on	

- 1.5 Reassignments will be based on the ranking available at 21:00 that day regardless of protests or requests for redress not yet decided.
- 1.6 If all fleets have not completed the same number of races by the end of a day, the fleets with fewer races will continue racing the following day until all fleets have completed the same number of races. All boats will thereafter race in the new fleets.
- 1.7 If at the end of the qualifying series a qualifying series fleet has completed more races than the other, any extra races will be abandoned so that all boats in the qualifying series have the same number of race scores.

2. FINAL SERIES

- 2.1 When at least four races have been completed in the qualifying series, boats will be assigned to final series fleets on the basis of their ranks in the qualifying series. There will be the same number of fleets in the final series as there were in the qualifying series.
- 2.2 The final series fleets will be, as nearly as possible, of equal size but so that the silver fleet is not larger than the gold fleet. Boats with the best qualifying series ranks will race all final series races in the gold fleet; other boats will race in the silver fleet.
- 2.3 After boats have been assigned to final series fleets, any recalculation of qualifying series ranking will not affect the assignments except that a redress decision may promote a boat to the gold fleet.
- 2.4 Different final series fleets need not have completed the same number of final races. The boats in the gold fleet will be ranked higher, except for a boat disqualified from a final series race under RRS 5, 6 or 69.



ADDENDUM 2 – RACING AREAS



Racing area	Approximate area center	Diameter	VHF Channel
Alfa	N 46° 55.993' E 17° 54.587'	2.8 km	27
Bravo	N 46° 55.862' E 17° 57.079'	3.2 km	77
Charlie	N 46° 54.400' E 17° 55.484'	3.2 km	27 or 77

ADDENDUM 3 – SCHEDULE OF RACES

	27 September 2018 Thursday		28 September 2018 Friday	
	Racing area Warning signal	#	Racing area Warning signal	#
29er	Alfa 11:00	4	Bravo 10:00	3
Optimist	Bravo Yellow: 11:00	3	Alfa Blue: 10:00	2
	Blue: 11:10	3	Yellow: 10:10	2



	29 September 2018 Saturday		30 September 2018 Sunday	
	Racing area Warning signal	#	Racing area Warning signal	#
29er	Alfa 10:00	4	Bravo 10:00	3
Optimist	Bravo	3	Alfa	2
	Gold: 10:00 Silver: 10:10	3	Gold: 10:00 Silver: 10:10	2

ADDENDUM 4A – 29er COURSE DIAGRAMS

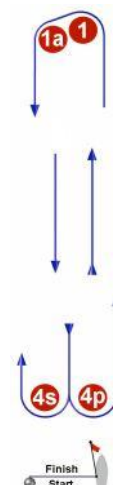
L



Windward-Leeward Course

Signal	Mark rounding order
L2	Start – 1 – 4s/4p – 1 – Finish
L3	Start – 1 – 4s/4p – 1 – 4s/4p – 1 – Finish

LA

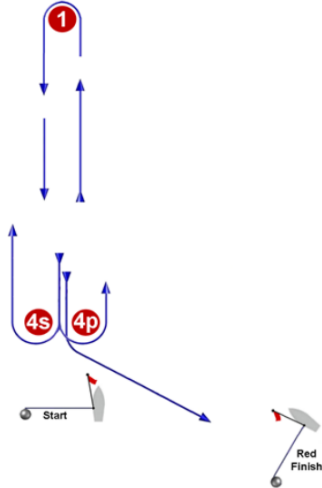


Windward-Leeward Course
with Offset Mark 1a

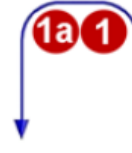
Signal	Mark rounding order
LA2	Start – 1 – 1a – 4s/4p – 1 – 1a – Finish
LA3	Start – 1 – 1a – 4s/4p – 1 – 1a – 4s/4p – 1 – 1a – Finish



LR



LRA

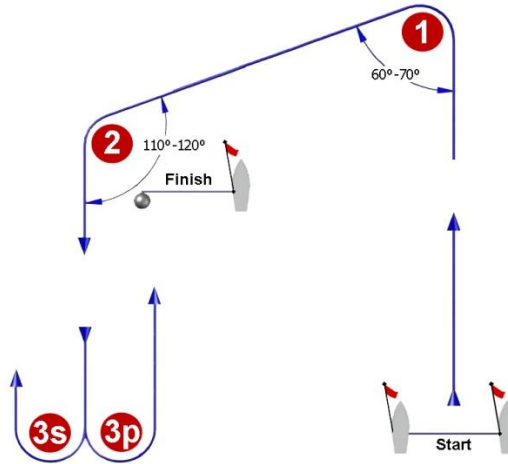


Course LR with Offset Mark 1a

Signal	Mark rounding order
LR2	Start – 1 – 4s/4p – 1 – 4p – Finish
LR3	Start – 1 – 4s/4p – 1 – 4s/4p – 1 – 4p – Finish

Signal	Mark rounding order
LRA2	Start – 1 – 1a – 4s/4p – 1 – 1a – 4p – Finish
LRA3	Start – 1 – 1a – 4s/4p – 1 – 1a – 4s/4p – 1 – 1a – 4p – Finish

ADDENDUM 4B – OPTIMIST COURSE DIAGRAM



Class	Mark rounding order
Optimist	Start – 1 – 2 – 3s/3p – Finish